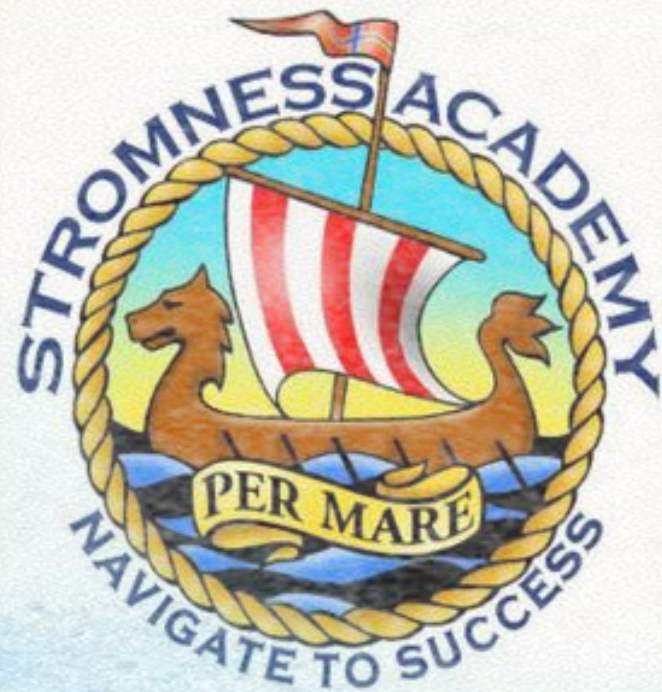


Stromness Academy

S3-5

Course Choice





S3-5 Course Choice

Presenters:

Mr Paul Barber, Headteacher

Mrs Rachael Wild: Depute Headteacher

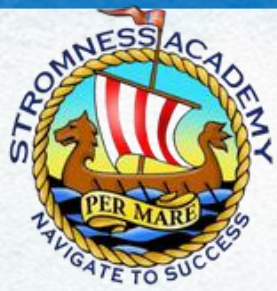
Mrs Pauline Black: UHI Orkney



Curriculum Rationale

Every pupil should leave us with skills, abilities and qualifications appropriate to their potential, enabling them to move on to a sustained positive destination





The Orkney Offer

Orkney has an integrated senior phase:

- courses available across Orkney
- choose the course level appropriate for you

Benefits:

- an increased choice of courses
- mixed-level classes likely
- less popular courses remain viable



What qualifications are there?

Courses exist at a range of levels:

- National 3/4/5
- Skills for work courses/ non-examined courses
- Highers
- Advanced Highers
- Foundation Apprenticeships
- HNC and Degree modules



Subject levels

Courses in the same subject are available at different levels.

Traditional view:

Most S4s take:

National 5

Most S5s take:

Higher

Most S6s take

Advanced Higher

National 4/5 are often taught together.



Subject levels

Courses in the same subject are available at different levels.

Reality:

Most S4s take:

National 4

National 5

S5s take:

A mixture of National 5's and Higher courses

Most S6s take

A mixture of National 5, Higher and Advanced Higher



If you are ready, with the skills and background knowledge, to take a different level you can.

Choose the course for you and your skills set:

S4 can take Higher without N5 in exceptional circumstances

S6 can take an N5 for breadth, interest or for their career.



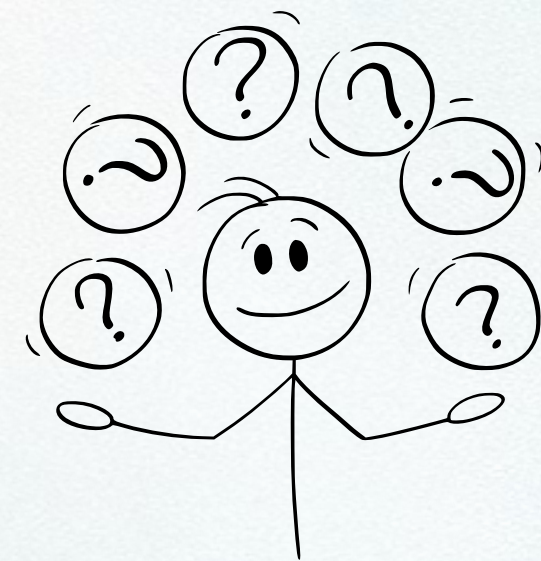
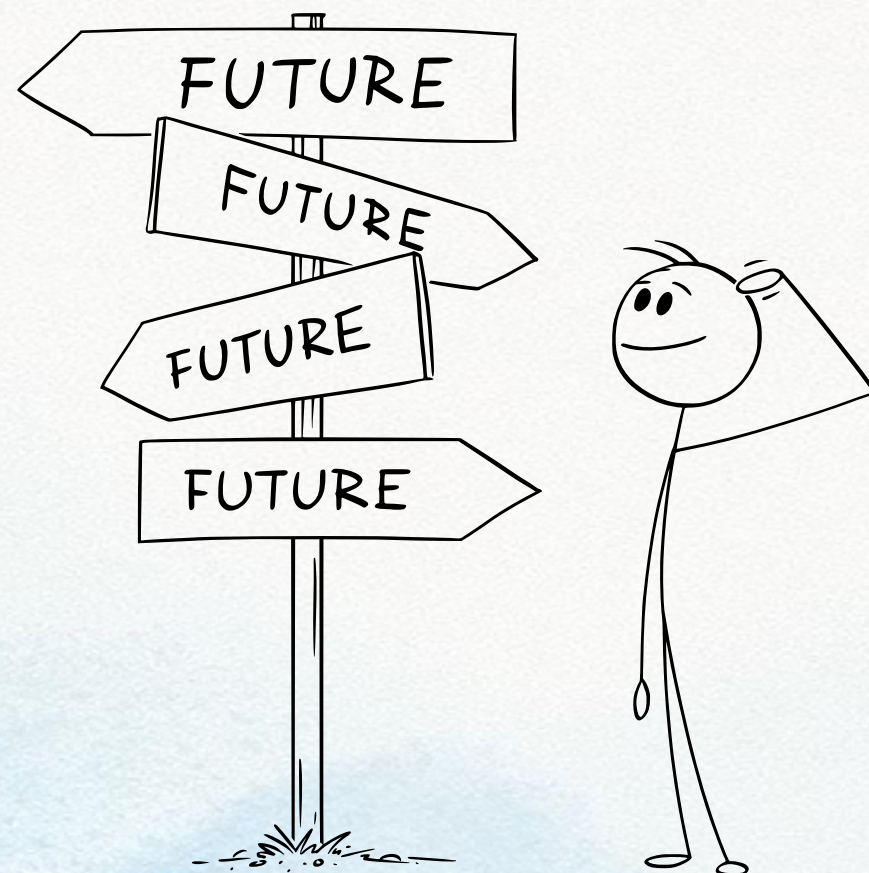


How many can I choose?

Six courses each year over S4-6

18 choices by S6

S4 must study English and Maths





A range of choices here at the Academy

Our course choices here are all collated into our senior phase options booklet.

You can find this on the school website:



Art & Design

[NEXT PAGE](#)

The Art & Design Department is fortunate to have excellent facilities for a whole range of Art & Design techniques and disciplines. We are tremendously proud of the quality of the teaching and studio spaces, providing students with a highly stimulating and exciting environment. In S5&6, students have permanent individual studio spaces on the mezzanine area. For information regarding Art & Design careers [CLICK HERE](#)

National 5 Art and Design

Expressive Project- investigations and developments leading to a final piece, usually still Life, portraiture or landscape

Design Project- market research and developments leading to a final design, usually graphic design, jewellery or fashion

Question Paper- learning to analyse and write about artists and designers 20%

Assessment- submission of practical portfolio of work + 1.5 hour written exam

Further information

[CLICK HERE](#)

Higher Art and Design

Expressive Project- investigations and developments leading to a final piece, usually still Life, portraiture or landscape

Design Project- market research and developments leading to a final design, usually graphic design, jewellery or fashion

Question paper- learning to analyse and write about artists and designers 23%

Assessment- submission of practical portfolio of work + 2 hour written exam

Further information

[CLICK HERE](#)

Accounting is a key function in the dynamic world of business. Accounting professionals create the strategies and carry out the work that leads businesses to success. This is why all industries, all over the world, need the best finance professionals. The purpose of the course is to enable learners to understand, and make use of, financial information so that they can prepare accounting statements and analyse, interpret and report on an organisation's financial performance. This course will suit students who enjoy numeracy-based learning, if you pay attention to detail and if you like to apply logical and analytical thinking.



N5 Accounting

The course has two main areas of study:

1. Financial Accounting - preparation, interpretation and analysis of financial accounting information .
2. Management Accounting - preparation of internal management accounting information, used by management when making decisions about future planning and control of their business

Assessment is via a 2-hour exam (72% of the overall marks) and a structured assignment (28% of the overall marks).

Note: there is no N4 Accounting course.

Further information

[CLICK HERE](#)



Higher Accounting



1. Financial Accounting

- Preparation of financial statements for partnerships and public limited companies;
- Understanding key accounting terms;
- Calculation and interpretation of investment ratios.



2. Managerial Accounting

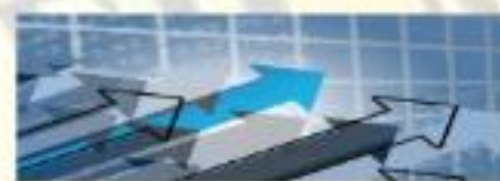
- Preparation of sales, production and complex cash budgets and a range of cost statements;
- Stock valuation calculation; decision making, for example, in terms of product mix and appraisal of investments.

Assessment is via a 2.5-hour exam (67% of the overall marks) and a structured assignment (33% of the overall marks).

Students can progress to pursue Advanced Higher Accounting at College or begin an Apprenticeship.

Further information

[CLICK HERE](#)



Managerial Accounting
vs Financial Accounting





College.....



Can I take a new subject?

This will be decided on an individual basis.

Some courses are new ones e.g. Higher Photography

Others will require you to build upon prior knowledge e.g. it is very hard to crash a Higher subject if you haven't studied it since S2.



How to get your options chosen

Collect an options sheet.

- Complete the subject you would like study.
- Speak to the PT of the subject and get their comment and signature.
- Get your parents and guidance to sign it.
- Hand it into the office
- Collect your online login
- Complete your options in preference order online by the deadline.
- Make six choices and a reserve (two if you have chosen a college course)



The Options Sheet



Stromness Academy

S3/4/5 Course Consultation for 2026/7



Please take this sheet to each PT/subject you are considering taking for next session. Staff will speak to you about the course and the recommendations they have for your progression. They will then complete the sheet to reflect this discussion and indicate their recommendation for you. Staff signatures show that a conversation has taken place. In senior phase we operate a points system – in line with SCQF levels, to ensure that pupils have a meaningful class commitment every year.

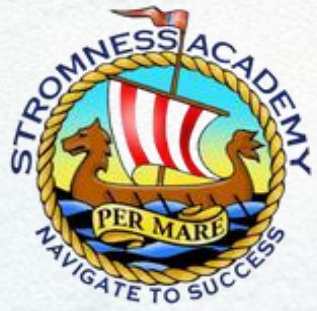
AH = 7 points; H = 6; N4/5 = 5. S4 should have 30 points and 6 National courses; S5 a minimum of 26 points and S6 a minimum of 22 points.

When completed, get this sheet signed by a parent/carer and return to your Guidance teacher. This will then be signed by your Guidance teacher and a copy returned to you for entering your final choices online in consultation with your parents. **This sheet is not your final course choice.**



Name		Reg	Guidance Teacher:	
Department	Course	Recommended level	Staff comment	Signature
Parental comment and signature				
Guidance comment and signature				





Our points system

To ensure each student has a meaningful class commitment, we employ a points system.

N4/5 = 5 points

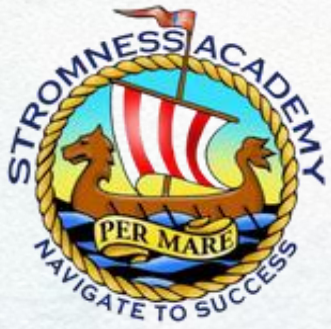
H / level 6 = 6 points

AH/ level 7 = 7 points

S4 should have 30 points

S5 should have a minimum of 26 points

S6 should have a minimum of 22 points.



Making the decisions

Think:

Enjoyment – take a look and decide whether you will find it interesting.

Opportunity – is it needed/ useful for your future career? Does it give you useful skills?

Informed – book an appointment at parents' evening to discuss it with a teacher or careers adviser.



However....

Don't choose it because:

- your mates are doing it
- you like/ hate the teacher
- other people liked it
- it looks good on job applications



Getting support

- Guidance teachers have 1-to-1 appointments with their students
- Our careers advisers are available for individual support
- MyWOW website
- Parents evening
- Teacher discussions
- Course choice booklet
- Reports



Careers Support

We have the SDS Careers service in school.
All students can book an appointment with them.
As parents, you can take a look at their website or
book in at parents' evening:

<https://www.myworldofwork.co.uk/>

<https://www.myworldofwork.co.uk/parents-and-carers>





Key Dates

S3 Parents' Evening:

Thursday 29th January

S3 choice deadline

Thursday 5th February

Senior Phase Parents' evening

Thursday 19th February

S4-5 Course Choice deadline

Friday 23rd February

Questions

